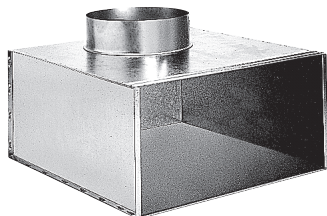


Collective static heat exchanger

11053532

RT161 plenum F0 504X404 D355



### Product description

The RT plenum is used on air supply or extract via the AC 161 and AC 163 grilles or the square diffusers SF704, AN704 TP and AF704.

### Fields of application

New, Refurbishment, Non-residential buildings

### Installation

- RT 160 models: grille attached with self-tapping screw,
- RT F0 models: concealed attachment to diffuser using side screws directly in neck,
- assembly attached to concrete slab using tabs on plenum.

### Reference arguments

- AC 161: single deflection grille with fixed horizontal fins at 40° incline, 20 mm pitch. Housing for 25 mm filter. Hinged front of grille closing with screw button.
- AC 163: 15 x 15 mm square mesh grille. Housing for 25 mm filter. Hinged front of grille closing with screw button.
- AC 161 Z and AC 163 Z models: aluminium with RAL9010 white finish.
- Stainless steel hinges.
- Concealed screw attachment in filter housing used as mounting frame.

### Main characteristics

- galvanised steel,
- rear connection.

### Dimensional data

Variants	H (mm)	L (mm)
11053532	404	504

