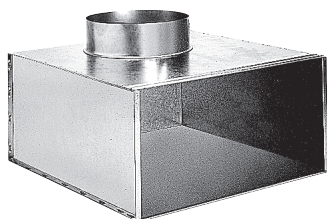


Collective static heat exchanger

11053534

RT161 plenum F0 504X504 D400



Product description

The RT plenum is used on air supply or extract via the AC 161 and AC 163 grilles or the square diffusers SF704, AN704 TP and AF704.

Fields of application

New, Refurbishment, Non-residential buildings

Installation

- RT 160 models: grille attached with self-tapping screw,
- RT F0 models: concealed attachment to diffuser using side screws directly in neck,
- assembly attached to concrete slab using tabs on plenum.

Reference arguments

- AC 161: single deflection grille with fixed horizontal fins at 40° incline, 20 mm pitch. Housing for 25 mm filter. Hinged front of grille closing with screw button.
- AC 163: 15 x 15 mm square mesh grille. Housing for 25 mm filter. Hinged front of grille closing with screw button.
- AC 161 Z and AC 163 Z models: aluminium with RAL9010 white finish.
- Stainless steel hinges.
- Concealed screw attachment in filter housing used as mounting frame.

Main characteristics

- galvanised steel,
- rear connection.

Dimensional data

Variants	H (mm)	L (mm)
11053534	504	504

