

Wall grille

11002023

SC 102D

The SC 102 D steel wall grille enables air extraction on all ventilation and air-conditioning systems.



Grille SC 102D

PRODUCT BENEFITS

- adjustable vanes,
- easy to install / remove.

Principles of operation

The SC 102 D dual-deflection has individually dirigible horizontal and vertical vanes to adjust the air supply level in a room.

Product description

The SC 102 D is a steel dual deflection wall-mounted grille, white paint coating, with individually adjustable, movable horizontal rear and vertical front vanes.

Fields of application

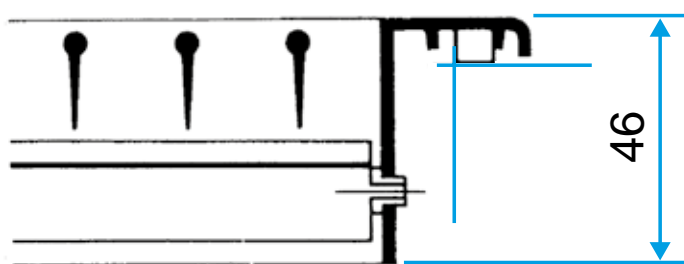
New, Refurbishment, Non-residential buildings

Installation

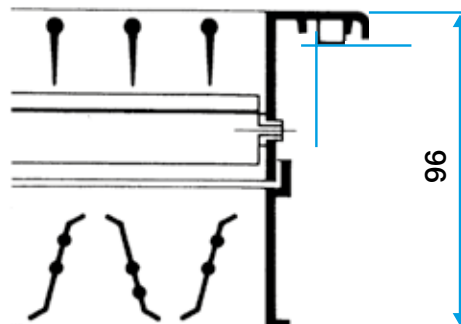
- wall installation,
- concealed F3 attachment using friction clips.

Main characteristics

- Steel with white epoxy paint finish, RAL 9003 30% matt,
- horizontal fins at the rear and vertical fins at the front, individually adjustable, 20 mm pitch
- dimensions from 75 x 75 to 1200 x 600 mm with increments of 25 mm in length & height.



Grille SC 102 D seule



Grille SC 102 D avec registre AGB ou SGS monté