

## Wall grille

# 11050069

## SC102D F3 600X150

The SC 102 D steel wall grille enables air extraction on all ventilation and air-conditioning systems.



SC102D F3 600X150

### PRODUCT BENEFITS

- adjustable vanes,
- easy to install / remove.

### Principles of operation

The SC 102 D dual-deflection has individually dirigible horizontal and vertical vanes to adjust the air supply level in a room.

### Product description

The SC 102 D is a steel dual deflection wall-mounted grille, white paint coating, with individually adjustable, movable horizontal rear and vertical front vanes.

### Fields of application

New, Refurbishment, Non-residential buildings

### Installation

- wall installation,
- concealed F3 attachment using friction clips.

### Reference arguments

- AC 101 and SC 101 F3: single deflection terminal (exhaust) with vertical, individually adjustable vanes, pitch 20 mm.
- AC 102 D F3 and SC 102 D F3: double deflection grille (air supply) with movable, individually adjustable horizontal fins at rear, vertical at front, 20 mm pitch.
- AC models: anodised aluminium, natural satin finish.
- SC models: steel with epoxy paint finish, RAL 9010 white.
- Concealed attachment using friction clips.

### Main characteristics

- Steel with white epoxy paint finish, RAL 9003 30% matt,
- horizontal fins at the rear and vertical fins at the front, individually adjustable, 20 mm pitch
- dimensions from 75 x 75 to 1200 x 600 mm with increments of 25 mm in length & height.

### Accessories

| Désignations                     | References |
|----------------------------------|------------|
| Adapter F4 600X150               | 11053770   |
| PLEN. ME F3 600X150/D160 PC      | 11053674   |
| MTF3 600X150/D160 PLENUM PA      | 11053644   |
| RECT DAMPER SGS 600X150          | 11053250   |
| ME Plenum F3 600X150/D160 PC cfg | 11053607   |
| MT Plenum F3 600X150/D160 PA cfg | 11053453   |

### General data

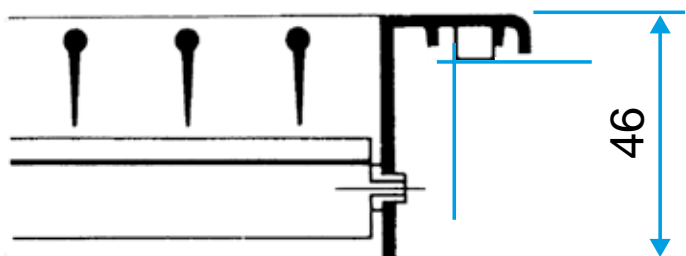
| References | Type of finish | Colour      |
|------------|----------------|-------------|
| 11050069   | Epoxy paint    | Lagoon blue |

Wall grille

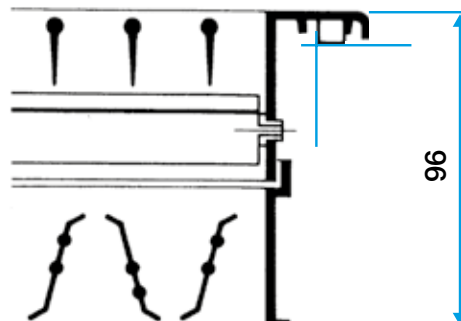
11050069  
SC102D F3 600X150

Dimensional data

| References | H (mm) | L (mm) |
|------------|--------|--------|
| 11050069   | 150    | 600    |



Grille SC 102 D seule



Grille SC 102 D avec registre AGB ou SGS monté

Airflow data

| References | Comfort airflow for $L_w < NR 25$ (m <sup>3</sup> /h) |
|------------|---|
| 11050069   | 900   |