

Duct grille

11002026

SD 102

The SD 102 indoor duct grille is used for air extraction in commercial buildings.

SD 102

PRODUCT BENEFITS

• suitable for circular and oblong ducts in all standard diameters.

Principles of operation

The SD 102 indoor duct grille operates on extraction for all ventilation and air conditioning systems in commercial buildings. Installed on cylindrical or oblong duct.

Product description

The SD 102 indoor duct grille is used for air extraction in all ventilation and air conditioning systems in commercial buildings. Installed on cylindrical or oblong duct. Single-deflection steel grille with individually adjusted movable vertical vanes, 20 mm pitch, RAL 9010 white epoxy coating 30% matt.

Fields of application

New, Refurbishment, Non-residential buildings

Installation

- attached to circular or oblong ducts,
- visible screw attachment in frame.

Reference arguments

• SD 102 single-deflection duct terminal with adjustable, movable vertical vanes at 20 mm pitch. • Dimensions: 325x75 to 1225x225 mm. • Suitable for all standard diameters of cylindrical or oblong ducts. • Used on exhaust terminals. • Galvanised steel with natural finish. • Visible screw attachment in frame. • Accessory: H damper with straight slide, locking screw, clip-mounted on terminal.

Duct grille

11002026

SD 102

Main characteristics

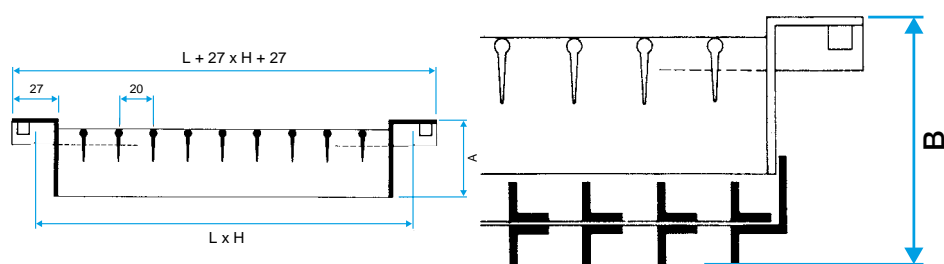
- single-deflection grille with individually adjusted movable vertical vanes, 20 mm pitch,
- steel with RAL 9010 white epoxy coating 30% matt,
- visible screw attachment in frame for cylindrical or oblong duct.

Accessories

Désignations	References
H DUCT GRILLE DAMPER 825X75	11053758
H DUCT GRILLE DAMPER 825X125	11053759
H DUCT GRILLE DAMPER 1025X125	11053760
H DUCT GRILLE DAMPER 1225X125	11053756
DUCT GRILLE DAMPER H525X225	11053956

Options

9010
JOINT
RAL1
RAL2
RAL4



Grille seule SD 102

Grille SD 102 avec registre H monté

Montage sur conduit circulaire