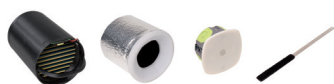


**Continuous exhaust fan****11014264****Soundproof foam electrostatic filter 105 mm**

With the EHT<sup>2</sup> filtered air inlet, there is finally an approved exhaust solution that blocks pollen and fine particles!

**PRODUCT BENEFITS**

- long-lasting improvement in indoor air quality,
- the only filtered humidity-controlled air inlet,
- easy to clean and no consumables required,
- Made in France.

**REGULATIONS AND COMPLIANCES**

Identification no. Q837 : 05/02-CHY1-2267; 05/02-CHY1-2266; 05/02-CHY2-2185  
Technical Opinion no. : 14.5/17-2266; 14.5/17-2267; 14.5/17-2185

**Principles of operation**

EHT<sup>2</sup> provides healthier air to the dwelling through a wall penetration duct and an external grille on the building façade. The filtered inlet is inserted in the duct to filter out fine particles before the air enters the building. Acoustic foam is also added for the attenuation of outdoor noise.

**Product description**

The EHT<sup>2</sup> filtered air inlet delivers fresh air and controls the distribution of airflow entering the dwelling based on the humidity level while filtering out fine particles:

- ePM10 90%,
- ePM2.5 80%,
- ePM1 77%,

The EHT<sup>2</sup> filtered air inlet includes soundproofing up to 41 dB for 300 mm walls and up to 43 dB for 350 mm walls (using a 50 mm acoustic foam extension).

**Fields of application**

Multi-occupancy residential housing, Individual residential housing, New, Refurbishment, Non-residential buildings

**Installation**

- The EHT<sup>2</sup> electrostatic filter is mounted in the duct inside the EHT<sup>2</sup> wall penetration
- 125 mm diameter connection to Bath/shower PVC pipe
- the EHT<sup>2</sup> / EFT<sup>2</sup> must be directly screwed onto the wall (no shaft),
- a 12 V DC or 24V power supply is required for the electrical box,
- the electrical box has a standard diameter of 67 mm and is supplied in the kit.

**Main characteristics**

- high performance acoustic air inlet,
- used in wall penetration,
- outdoor hoods available in white or sand.

**Supplementary characteristics**

This product is also compatible with EFT<sup>2</sup> fixed air inlets.

The electrostatic filter for EHT<sup>2</sup> is supplied as a kit including 114 mm acoustic foam, a D67 mm electrical box and a cleaning brush.

The EHT<sup>2</sup> or EFT<sup>2</sup> air inlet, the GEB or GES external cover and the transformer must be ordered separately. You will also need a standard PVC duct with external diameter of 125 mm.

## Continuous exhaust fan

11014264

Soundproof foam electrostatic filter 105 mm

## Contents of kits

Electrostatic filter for EHT<sup>2</sup>;1  
 Electrical box diameter 67 mm;1  
 Acoustic foam 114 mm;1  
 Cleaning brush for electrostatic filter;1  
 Velcro pad to attach brush;1  
 QR code sticker for application on EHT<sup>2</sup> air inlet;1  
 Safety instructions;1  
 Installation guide;1

## Accessories

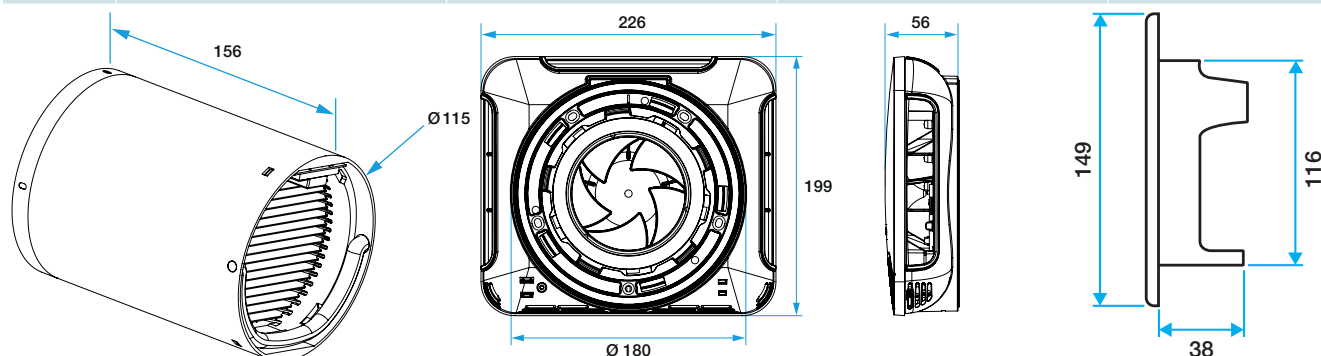
Description	Variants
GEB 125 (149x149x38 mm)	11011240
GES 125 (149x149x38 mm)	11011243
Cleaning brush for Electrostatic precipitator for EHT <sup>2</sup> /EFT <sup>2</sup>	11014266
Acoustic foam extension, Electrostatic precipitator for EHT <sup>2</sup> /EFT <sup>2</sup> 50 mm	11014265
Power supply 12 VDC - 30 W Fuse	11017161
GEA 125	11011238

## General data

Variants	Main material
11014264	Plastic

## Dimensional data

Variants	H (mm)	L (mm)	P (mm)	Ø connection (mm)
11014264	124	162	310	125



## Installation



La mousse acoustique et l'Electrofiltre sont introduits à l'intérieur d'un tube PVC de diamètre extérieur 125 mm

Composition entrée d'air EHT<sup>2</sup> et EFT<sup>2</sup>