

# 11024138

## TAVA® 355 M MICRO-WATT

The roof fan range that makes ventilation easier.



Tava-MW

### PRODUCT BENEFITS

- airflow from 600 to 14,000 m<sup>3</sup>/h,
- optional constant pressure controller kit,
- refined design,
- wide range of installation accessories,
- ErP-compliant with speed controller or controller kit.

### REGLEMENTATIONS AND COMPLIANCES

Technical Opinion no.: 14.5/16-2185\_V2

### Principles of operation

Low-consumption roof exhaust fan with vertical discharge for CMEV in multi-occupancy housing and non-residential buildings.

### Product description

Aluminium housing for good corrosion resistance, EC motor for low energy consumption, vertical discharge.

### Fields of application

Multi-occupancy residential housing, New, Refurbishment, Non-residential buildings

### Installation

- horizontal outlet,
- flat or sloping roof with masonry base or accessory.

### Reference arguments

Application:

- Low consumption roof exhaust fan for flat or sloping roof, vertical jet, 2500 m<sup>3</sup>/h
- Designed for multi-occupancy residential or non-residential CMEV

Description:

- Aluminium unit for good corrosion resistance
- Anti-bird screen
- Backward curve centrifuge impeller
- Temperature control built into motor
- Asynchronous EC motor single-phase IP54
- Optional constant pressure controller kit with 2 possible values (day/night)
- Direct control possible via 0-10V using speed controller
- Lockable proximity switch as standard

# 11024138

## TAVA® 355 M MICRO-WATT

### Main characteristics

- 10 sizes available from 600 to 14,000 m<sup>3</sup>/h
- aluminium AlMg3, weather resistant, low height. The motor unit tilts to make installation (optional accessories) and maintenance easier,
- the air outlet is protected by a screen to prevent intrusions, birds and other foreign objects,
- centrifugal backward curve impeller, balanced on the motor as per quality class G 6.3 DIN / ISO 1940,
- maintenance-free drive motor mounted on ball bearings with lifelong lubrication,
- motor protection by thermal contact built into winding,
- lockable proximity switch as standard,
- EC low-consumption motor,
- single-phase or 3-phase power supply depending on size,
- direct control possible via 0-10V,
- optional constant pressure controller kit with 2 possible values (day/night).

### Accessories

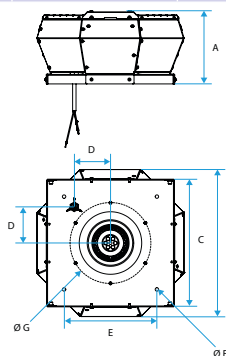
Désignations	References
Backdraft damper Ø 400	11024464
Pressure sensor + tube kit (2 m tube)	11024466
Constant pressure control kit	11024467
Flexible sleeve 400	11024459
INSULATED STACK BASE 355 INCLINED ROOF	11024252
Insulated flat roof base with sound attenuator TAHA-TAVA 355	11024448
EC motor 0-10V 20K potentiometer for TAHA-TAVA micro-watt	11024468

### General data

References	Type of motor
11024138	EC

### Dimensional data

References	A (mm)	B (mm)	C (mm)	D (mm)	E (mm)	F (mm)	G (mm)	Weight (kg)
11024138	333	745	598	192,5	450	4 x Ø11	Ø438 M6x15 (6x)	15,4



Tava® Micro-watt

### Airflow data

References	Airflow (m <sup>3</sup> /h)
11024138	1700

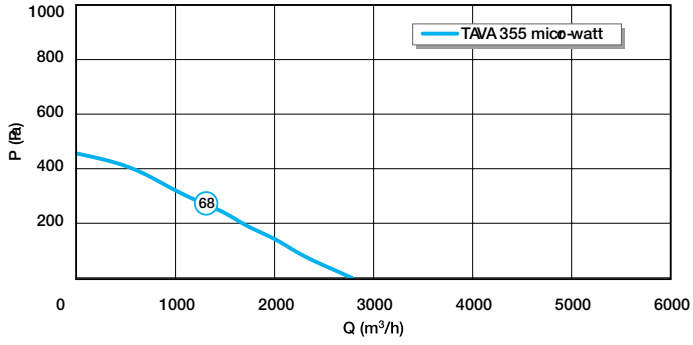
### Electrical datas

References	Protection rating	Max. current consumption SINGLE-PHASE 230 V (A)	Maximum current (A)	Power supply	Max. power
11024138	IP54	1.4	1.4	Single-phase	0,165

# 11024138

## TAVA® 355 M MICRO-WATT

### Curve



Tava-MW-355