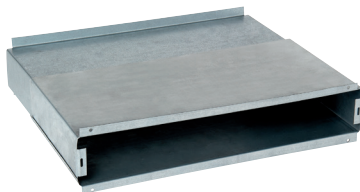


Small outlet

11011389

TR connection sleeve 14 to 27 cm



Product description

Accessories for the MTR sleeve improve acoustic attenuation and prevent the ingress of water through the air inlet.

Fields of application

Multi-occupancy residential housing, New, Refurbishment

Installation

- the masonry hood is installed on the outside of the brick wall.

Reference arguments

The RT rectangular wall penetration sleeve is made of galvanised sheet, comprising 2 sliding parts. It is used for wall penetration depths from 14 to 27 cm.

Main characteristics

- plastic material,
- white colour.

Dimensional data

Variants	H (mm)	w (mm)	L (mm)
11011389	44	280	140