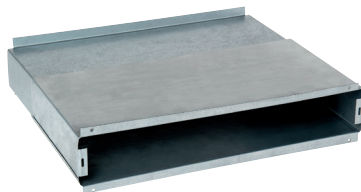


Small outlet

11011390

TR connection sleeve 19 to 32 cm



### Product description

Accessories for the MTR sleeve improve acoustic attenuation and prevent the ingress of water through the air inlet.

### Fields of application

Multi-occupancy residential housing, New, Refurbishment

### Installation

- the masonry hood is installed on the outside of the brick wall.

### Reference arguments

The RT rectangular wall penetration sleeve is made of galvanised sheet, comprising 2 sliding parts. It is used for wall penetration depths from 19 to 32 cm.

### Main characteristics

- plastic material,
- white colour.

### Dimensional data

Variants	H (mm)	w (mm)	L (mm)
11011390	44	280	190