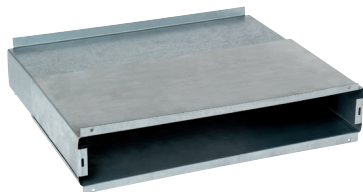


Small outlet

11011400

TR connection sleeve 7 to 14 cm



Product description

Accessories for the MTR sleeve improve acoustic attenuation and prevent the ingress of water through the air inlet.

Fields of application

Multi-occupancy residential housing, New, Refurbishment

Installation

- the masonry hood is installed on the outside of the brick wall.

Reference arguments

- The Rectangular wall penetration sleeve is made of galvanised sheet, comprising 2 sliding parts. It is used for wall penetration depths from 14 to 27 cm or from 19 to 32 cm.

Main characteristics

- plastic material,
- white colour.

Dimensional data

Variants	H (mm)	L (mm)	P (mm)
11011400	44	280	70