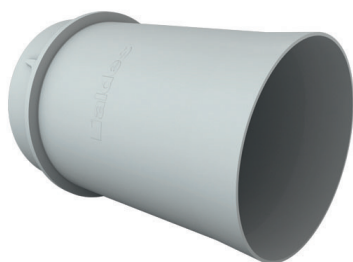


Semi-rigid plastic accessory for oval OPTIFLEX ductwork

# 11091891

## Unit connector OPTIFLEX® for duct Ø 90



### Product description

Optiflex® circular Ø 90 mm accessories are used to connect Optiflex® circular ducts in a ventilation system.

### Fields of application

Multi-occupancy residential housing, Individual residential housing, New, Refurbishment

### Installation

- accessories easily slotted onto duct,
- use Optiflex® seals ordered separately to ensure an airtight seal.

### Reference arguments

Application:

- Perfectly suitable for exhaust or heat recovery systems,
- New builds or refurbishment
- Used to connect a section of circular ducting to the distribution unit

Description:

- Material: Polypropylene
- Height: 102 mm
- Width: 102 mm
- Depth: 90 mm

### Main characteristics

- semi-rigid accessory,
- internal/external diameter:  
- Ø 78/90 mm.
- material: ABS plastic,
- temperature range: -5 to +60°C.